

## **Graduate Transfer Credit Policy**

### **Transfer Students**

#### **General Policy**

A transfer student is defined as any student who has previously matriculated as a degree candidate at another institution and has earned or is earning college-level academic credit at graduate level.

Students applying for transfer to Olivet University must follow the admission procedures. Official college transcripts from all schools attended must be sent directly from the previously attended college(s) to:

Olivet University  
Attn: Admissions  
36401 Tripp Flats Rd,  
Anza, CA 92539

Coursework transferred or accepted for credit toward any OU degree must be relevant to the degree program, with course content and level of instruction resulting in student competencies at least equivalent to those of students enrolled in this university's own degree programs.

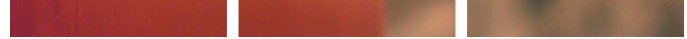
In assessing and documenting equivalent learning and qualified faculty, OU personnel consult official institutional catalogs and employ recognized guides, which aid in the evaluation for credit. Such guides include those published by the American Council on Education, the American Association of Collegiate Registrars and Admissions Officers (AACRAO), and the National Association of Foreign Student Affairs, or such services as are provided by AACRAO or the World Education Services (WES).

OU accepts transfer credit from other accredited educational institutions subject to the following general criteria:

- A minimum grade of "B" (or equivalent); courses graded "pass/fail" are not transferred unless it is stipulated on the transcript that a "pass" required a grade of "B" (3.0) or above;
- Credit is applicable to the OU program of study in which the student intends to enroll.

In order to assist students with curricular planning, the transfer evaluation process must be completed as soon as possible. After enrollment at the university, courses taken at another institution are evaluated for transfer by the Registrar's Office.

Transfer courses are evaluated in the Office of Admissions for acceptance of core curriculum requirements and general elective credit. Transfer credits applied toward major requirements are determined in consultation with the appropriate academic divisions.



## **Specific Policies**

Transfer credit is awarded based on specific requirements:

- Credit must be awarded from an official college or university transcript or from an official document considered equivalent to a transcript by the Registrar.
- Courses taken in a college or university in a continuing education or extension program must be applicable toward the MA degree being pursued by full-time students at that institution.
- The maximum credit transferrable from another institution at the graduate level is:  
50% for the M.Div. program, or 68 quarter credit hours  
50% for the MA or MBA programs, or 28 quarter credit hours  
15% for the D.Min. program, or 6 quarter credit hours
- Only equivalent level graduate course work will be accepted toward their respective degrees.
- A student who fails to finish by his/her anticipated graduation date may transfer credits necessary to graduate for up to two years afterwards. After two years, the student will be withdrawn automatically from the university, but may petition the Academic Council for permission to complete the degree.
- Previously awarded transfer credit will be deducted if coursework is repeated.
- Developmental courses that are similar in content to credit earning courses at Olivet University will be accepted; however, those courses that are not applied toward a degree at the transferring institution will not be accepted.
- No transfer credit is granted for Certificate programs.
- Olivet University does not award credit for experiential education.
- Olivet University has not entered into an articulation or transfer agreement with any other college or university.
- Students seeking to transfer credit from institutions outside the United States and Canada are subject to having their transcripts reviewed by a credentials evaluation service as a guide for transfer credit evaluation (see "Transfer Students - Specific Policies" section of this Catalog for more information).

Olivet University reserves the right to notify applicants that they must have their non U.S. academic transcripts evaluated by an academic transcript evaluating agency using a course-by-course report.

Olivet prefers that transcripts be evaluated by the American Association of Collegiate Registrars and Admissions Officers (AACRAO). In such cases, credit and placement decisions are based on recommendations of AACRAO. (Credentials evaluation reports are the financial responsibility of the applicant.)



### **Credit Hour Equivalences**

- The credit hour minimums are based on courses from quarter calendar institutions. If a course at another institution is offered for fewer credit hours than an equivalent course at Olivet University, the student will be given transfer credit for the equivalent course at Olivet University but only for the number of credit hours earned at the other institution. In such cases, the student may need to take an additional course to fulfill credit hour requirements.
- When semester credit is converted to quarter hour equivalents, a conversion factor of two-thirds is used. When conversions result in fractions, credit granted per course is reduced to the nearest whole number. Fractions are accumulated and reduced to the nearest whole number, and general elective credit is awarded for that total.

### **Transfer Grades**

- A student's grade point average at Olivet University is based only on courses completed at this institution. The Olivet University grade point average is used to determine academic standing and graduation.
- Transfer grade equivalents will be determined and recorded with the student's transfer credit. Credit will be awarded for courses in which a "C" or higher was earned. Grades of "F" are included in the calculation of the transfer grade point average.
- Transfer grades and grade point averages are assigned on the basis of the Olivet University grading policy. For courses taken at institutions that use combined grades (e.g., "AB"), the lower grade will be used. Courses taken at institutions that use a grading system not comparable to the Olivet University grading system will be evaluated with the transfer grade equivalents of Pass or Not Pass. "Withdraw failing" grades are calculated in a student's transfer grade point average as "F" grades.
- When fractions are accumulated and awarded as general electives, grade points are accumulated in similar fashion. For example, a student who took one four quarter hour course with an "A" and two four quarter hour courses with a "B" would receive general elective credit (to compensate for fractions) for two credit hours and six grade points.

### **Transfer Admissions Requirements**

Transfer credits may be accepted no more than 8 quarter hours or the equivalent awarded by another recognized institution. Master transfer is for applicants who meet the following eligibility standards:

- Meet admission requirements
- Good standing at the last college or university attended
- Overall grade point average of 3.0 (B) or better in all transferable units attempted